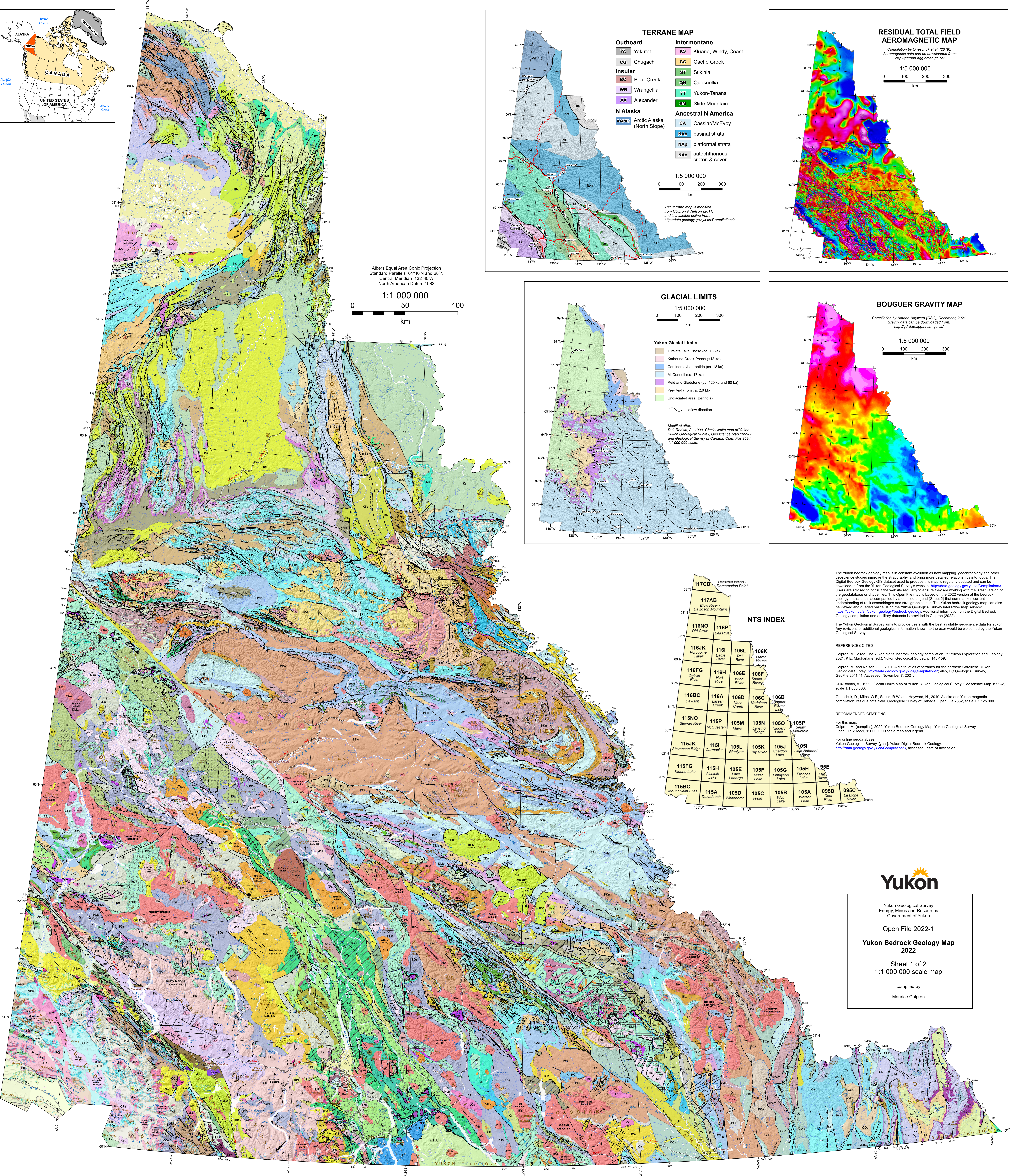
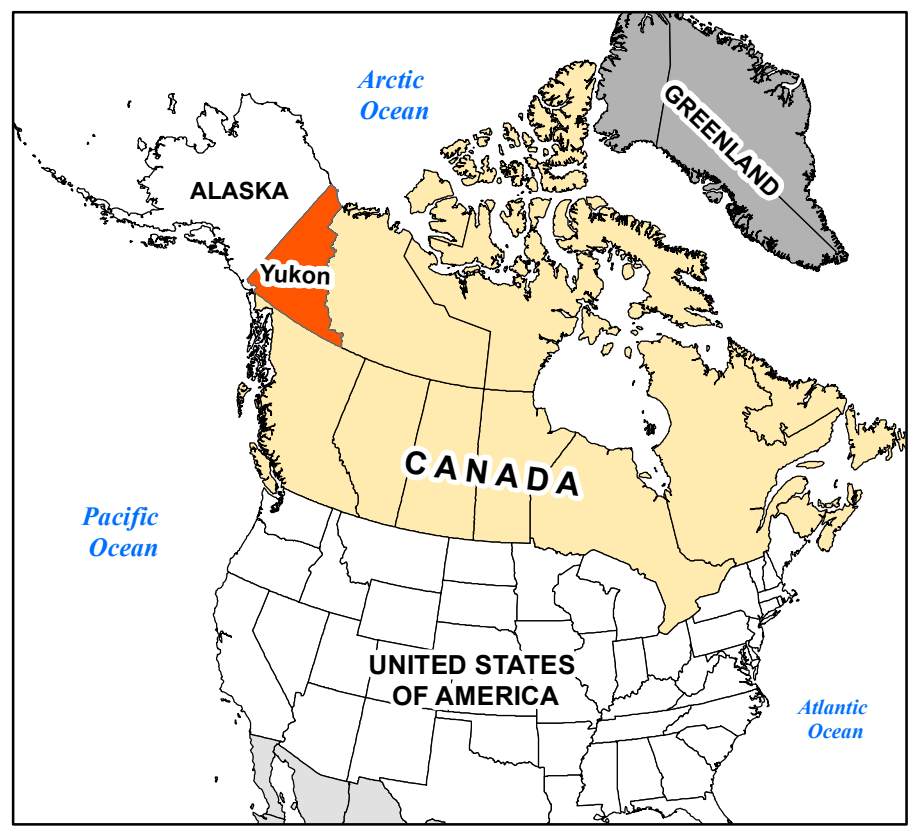


Yukon Bedrock Geology Map

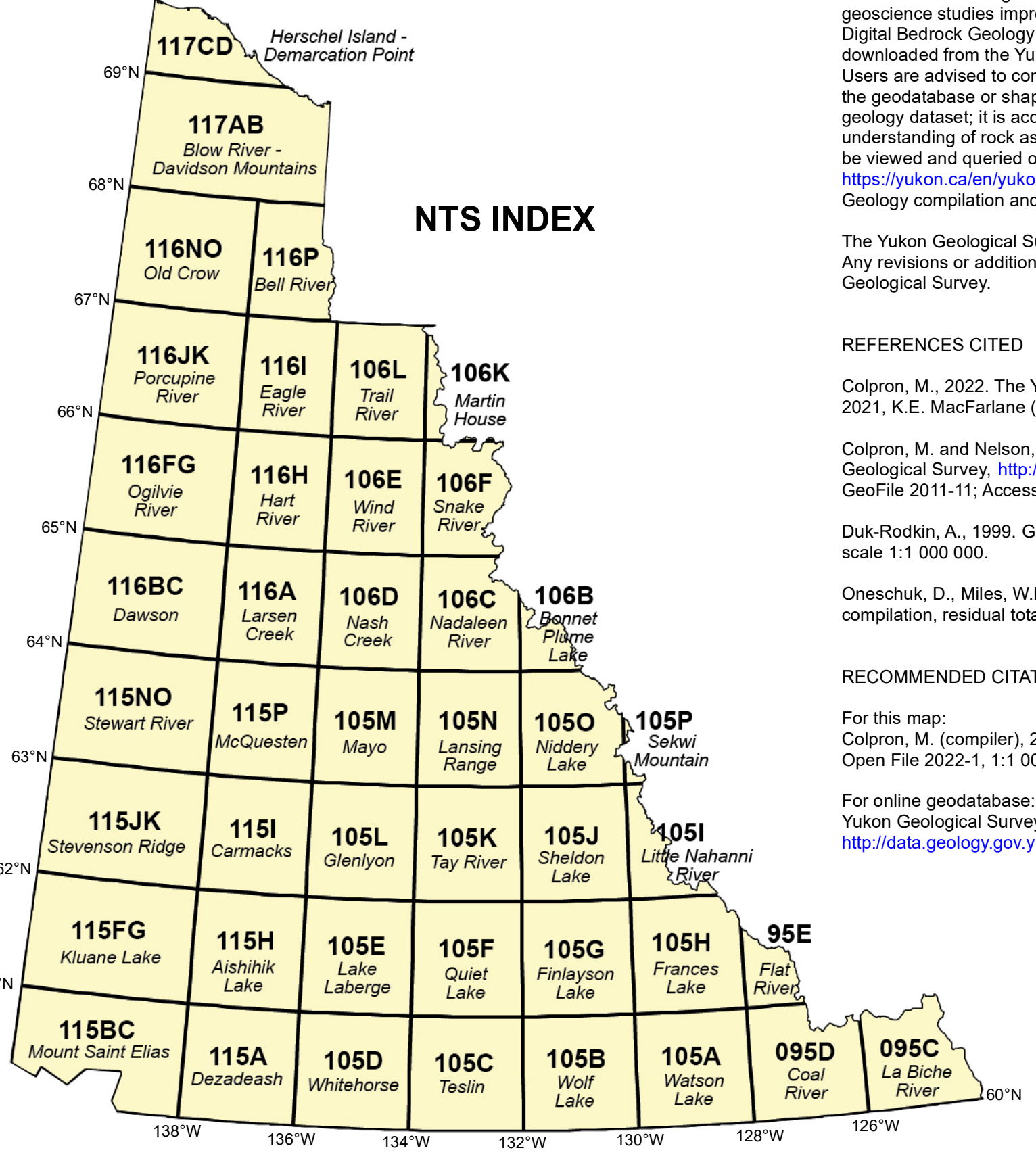
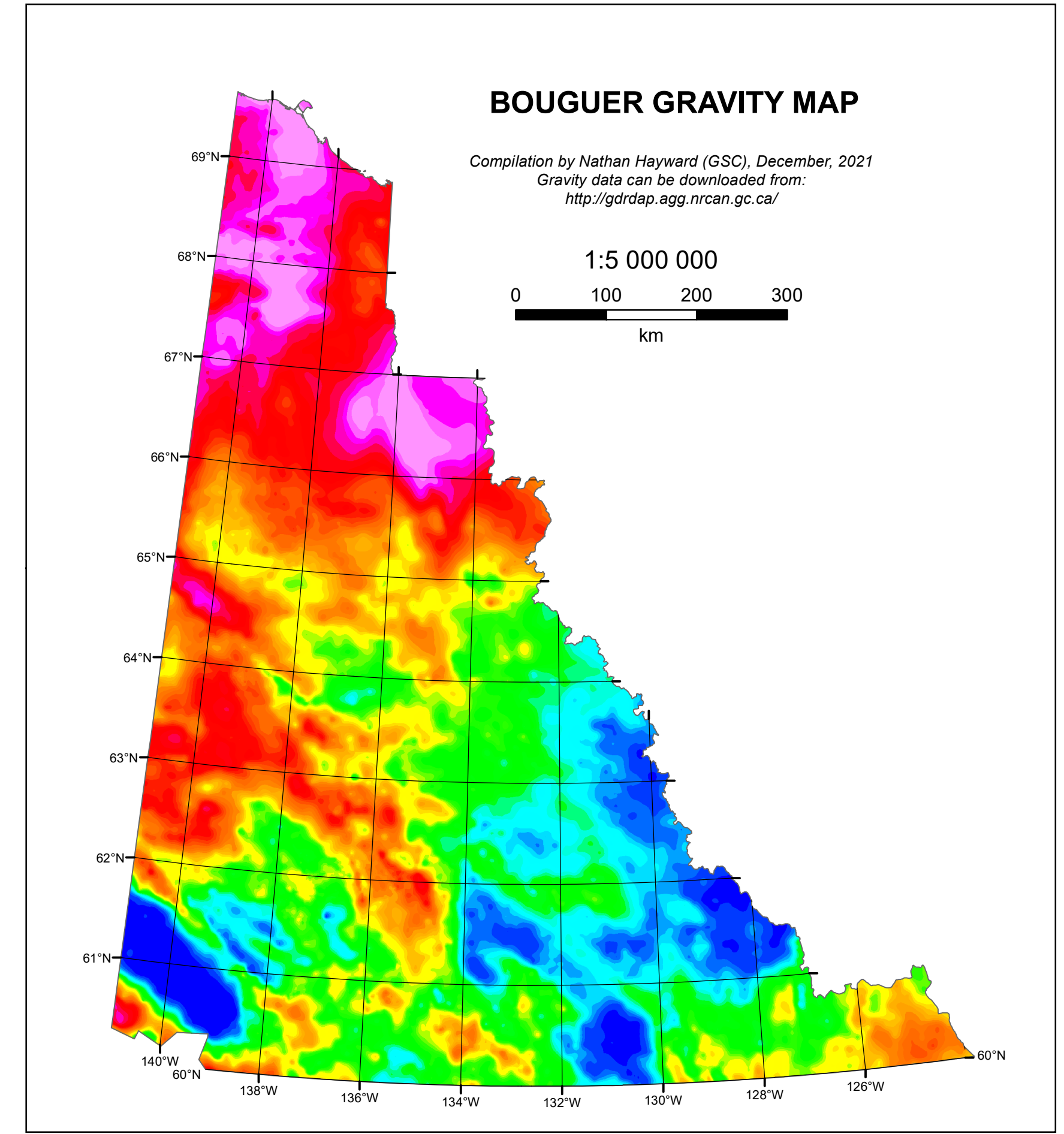
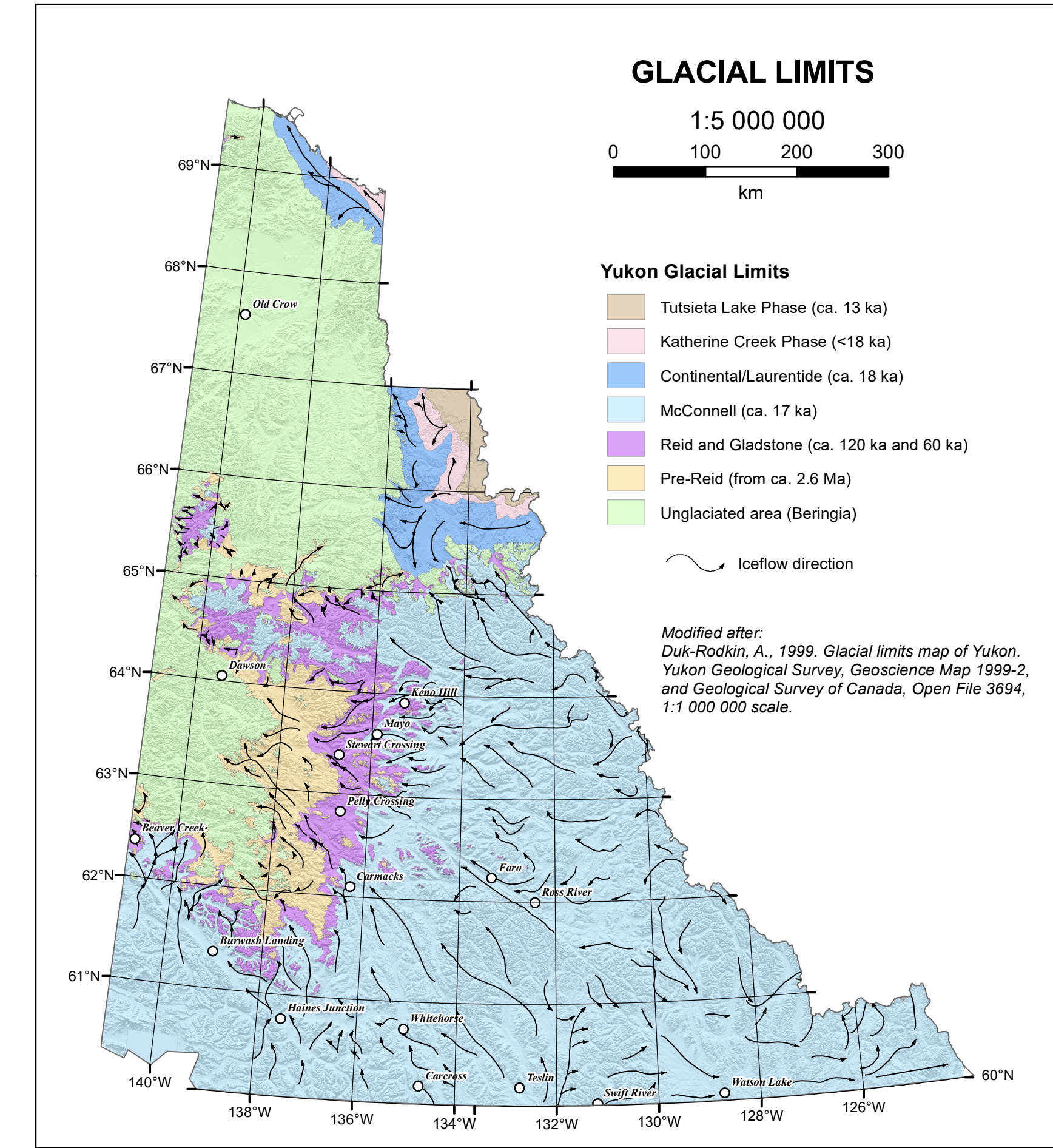
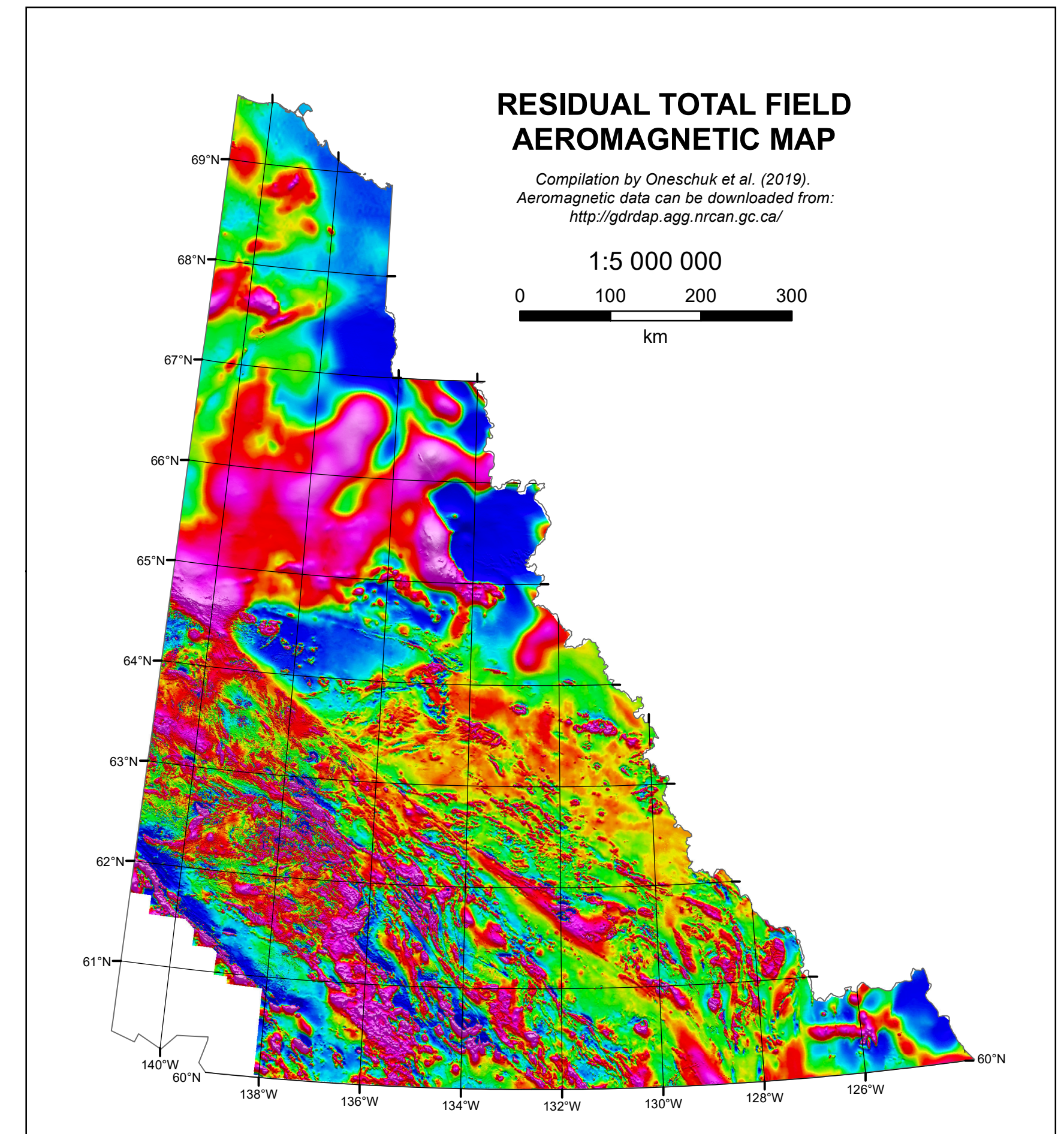
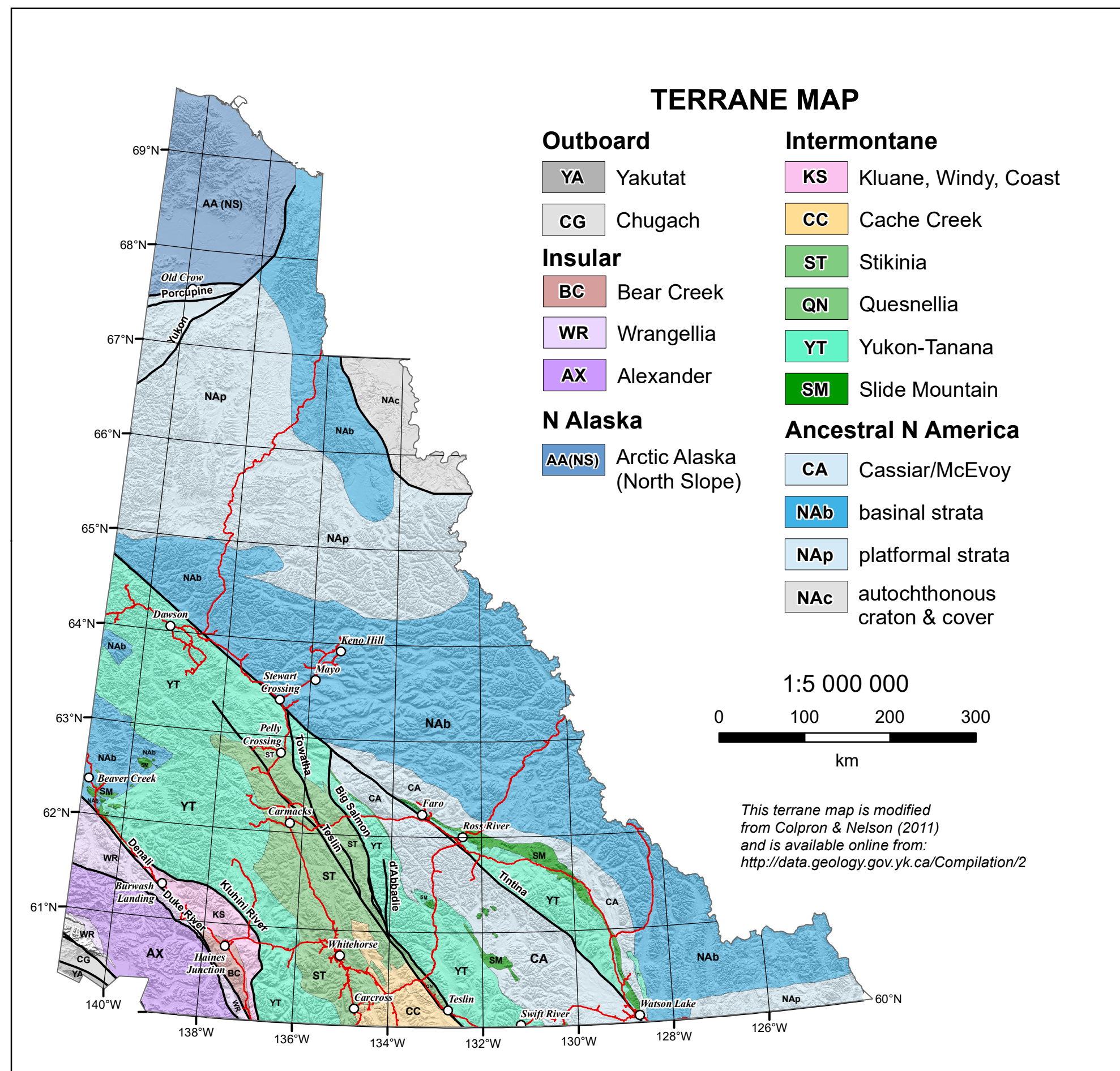
2022



Albers Equal Area Conic Projection
 Standard Parallels 61°40'N and 68°N
 Central Meridian 132°30'W
 North American Datum 1983

1:1 000 000

0 50 100 km



The Yukon bedrock geology map is in constant evolution as new mapping, geochronology and other geoscience studies improve the stratigraphy, and bring more detailed relationships into focus. The Digital Bedrock Geology (DBG) dataset used to produce this map is regularly updated and can be downloaded from the Yukon Geological Survey's website: <http://data.geology.gov.yk.ca/Compilation2>. Users are advised to consult the website regularly to ensure they are working with the latest version of the geodatabase or shape files. This Open File map is based on the 2022 version of the bedrock geology dataset; it is accompanied by a detailed Legend (Sheet 2) that summarizes current understanding of rock assemblages and stratigraphic units. The Yukon bedrock geology map can also be viewed and queried online using the Yukon Geological Survey interactive map service: <https://yukon.ca/yukon-geology/bedrock-geology>. Additional information on the Digital Bedrock Geology compilation and ancillary datasets is provided in Colpron (2022).

The Yukon Geological Survey aims to provide users with the best available geoscience data for Yukon. Any revisions or additional geological information known to the user would be welcomed by the Yukon Geological Survey.

REFERENCES CITED

Colpron, M., 2022. The Yukon digital bedrock geology compilation. In: Yukon Exploration and Geology 2021, K.E. MacFarlane (ed.), Yukon Geological Survey, p. 143-159.

Colpron, M. and Nelson, J.L., 2011. A digital atlas of terranes for the northern Cordillera. Yukon Geological Survey, <http://data.geology.gov.yk.ca/Compilation2>; also, BC Geological Survey, Geofiles 2011-11, Accessed: November 7, 2021.

Duk-Rodini, A., 1999. Glacial Limits Map of Yukon. Yukon Geological Survey, Geoscience Map 1999-2, scale 1:1 000 000.

Oreschuk, D., Miles, W.F., Saltus, R.W. and Hayward, N., 2019. Alaska and Yukon magnetic compilation, residual total field. Geological Survey of Canada, Open File 7862, scale 1:1 125 000.

RECOMMENDED CITATIONS

For this map:
 Colpron, M. (compiler), 2022. Yukon Bedrock Geology Map. Yukon Geological Survey, Open File 2022-1, 1:1 000 000 scale map and legend.

For online geodatabases:
 Yukon Geological Survey, [year] Yukon Digital Bedrock Geology, <http://data.geology.gov.yk.ca/Compilation2>, accessed: [date of access].

Yukon

Yukon Geological Survey
 Energy, Mines and Resources
 Government of Yukon

Open File 2022-1

Yukon Bedrock Geology Map
 2022

Sheet 1 of 2
 1:1 000 000 scale map

compiled by
 Maurice Colpron