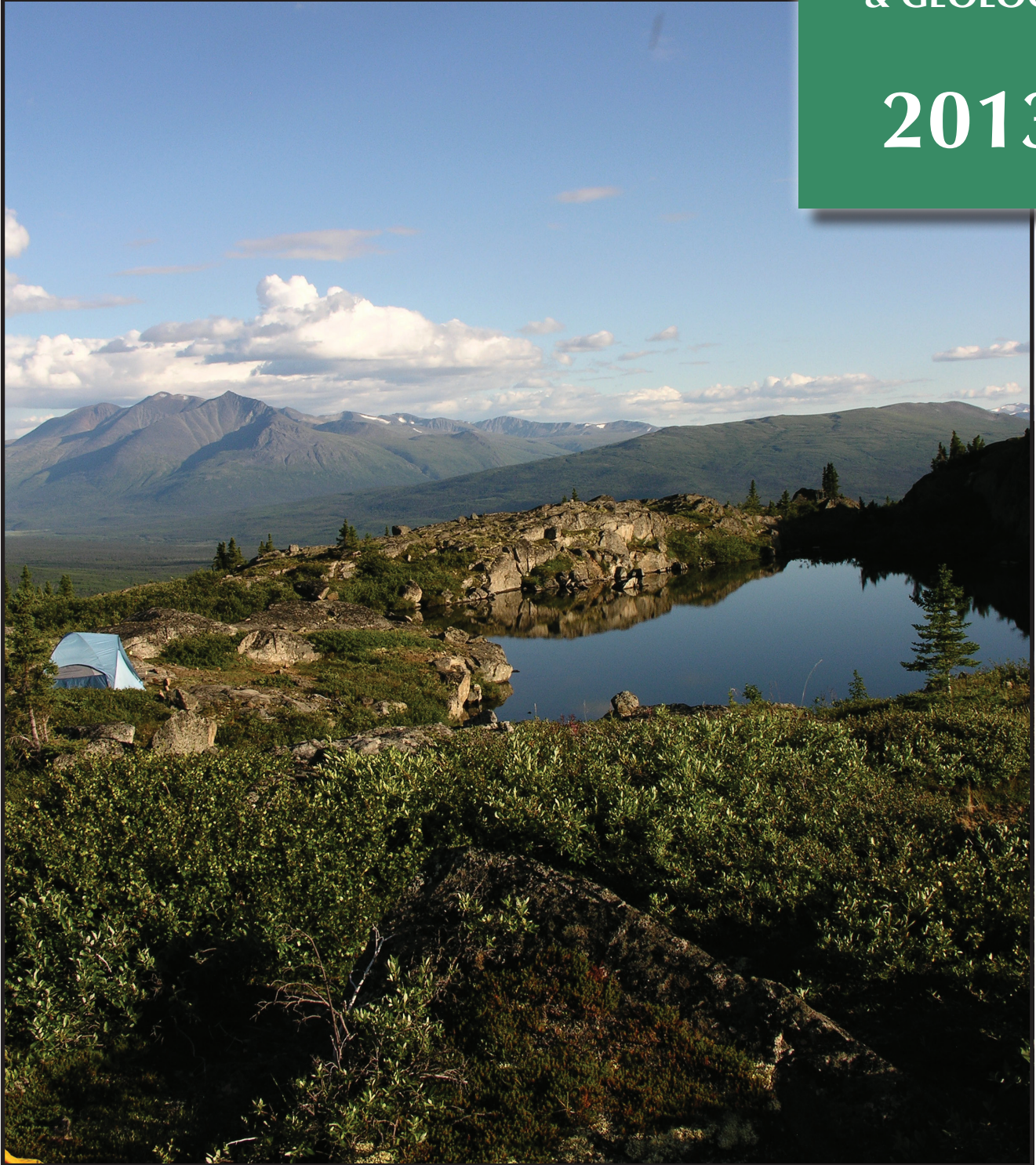


Energy, Mines and Resources • *Yukon Geological Survey*

YUKON EXPLORATION & GEOLOGY

2013



Yukon Mines and Exploration Projects 2013

YUKON TERRANES

Outboard	Intermontane	Ancestral North America
Chugach	Cache Creek	Cassiar
Yakutat	Stikinia	basinal facies
Insular	Quesnellia	shelf facies
Wrangellia	Yukon-Tanana	craton & cover
Alexander	Slide Mountain	Arctic
Kluane schist		Arctic Alaska

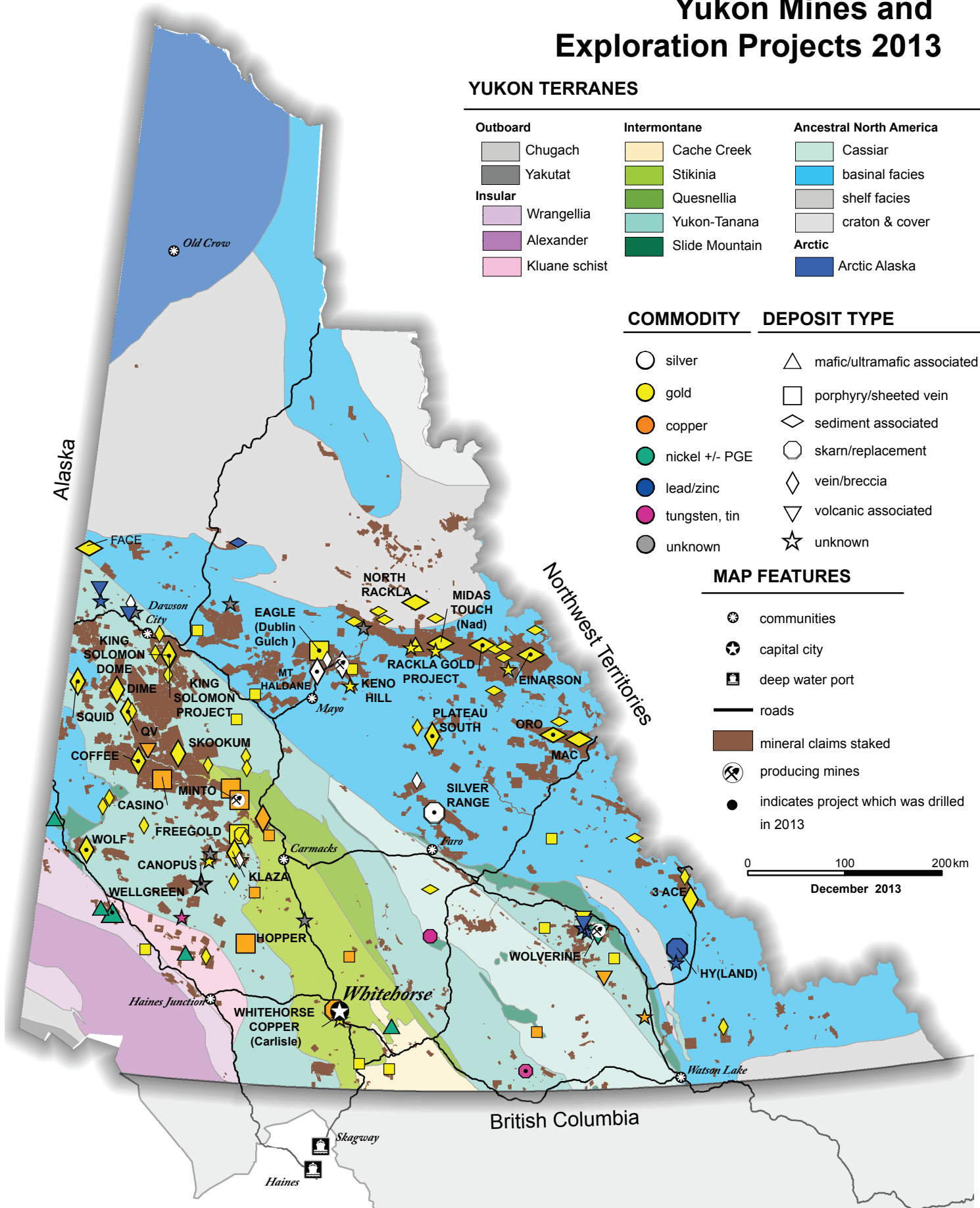
COMMODITY DEPOSIT TYPE

silver	mafic/ultramafic associated
gold	porphyry/sheeted vein
copper	sediment associated
nickel +/- PGE	skarn/replacement
lead/zinc	vein/breccia
tungsten, tin	volcanic associated
unknown	unknown

MAP FEATURES

communities
capital city
deep water port
roads
mineral claims staked
producing mines
indicates project which was drilled in 2013

0 100 200 km
December 2013



Yukon exploration projects, 2013. Advanced projects (>\$100 000) have large labelled symbols, and early stage projects (<\$100 000) have small unlabelled symbols. Dot in centre of symbol indicates drilling constituted part of the exploration activities.

YUKON
EXPLORATION
& GEOLOGY

2013

Edited by
K.E. MacFarlane, M.G. Nordling,
and P.J. Sack

Yukon Geological Survey
Energy, Mines and Resources
Government of Yukon

Published under the authority of the Department of Energy, Mines and Resources, Government of Yukon <http://www.emr.gov.yk.ca>.

Printed in Whitehorse, Yukon, 2014.

Publié avec l'autorisation du Ministère de l'Énergie, des Mines et des Ressources du gouvernement du Yukon, <http://www.emr.gov.yk.ca>.

Imprimé à Whitehorse (Yukon) en 2014.

© Department of Energy, Mines and Resources, Government of Yukon

ISSN 1718-8326 (on-line version)

This, and other Yukon Geological Survey publications, may be obtained from:

Yukon Geological Survey

102-300 Main Street

Box 2703 (K-102)

Whitehorse, Yukon, Canada Y1A 2C6

phone (867) 667-3201, e-mail geology@gov.yk.ca

Visit the Yukon Geological Survey website at www.geology.gov.yk.ca.

In referring to this publication, please use the following citation:

Yukon Exploration and Geology 2013. K.E. MacFarlane, M.G. Nordling, and P.J. Sack (eds.), 2014.

Yukon Geological Survey, 232 p.

Papers are available in colour and can be obtained from the Yukon Geological Survey website.

Front cover photograph: Looking south across the Dezadeash Ranges. Photo by Steve Israel.

PREFACE

Yukon Exploration and Geology (YEG) and the Yukon Exploration and Geology Overview continue to be the main publications of the Yukon Geological Survey (Energy, Mines and Resources, Government of Yukon). Individual YEG papers, with colour images, are available in digital format only and can be downloaded from our website. The YEG Overview is available in a digital format (colour), as well as in a limited print run (black and white).

YEG 2013 contains up-to-date information on mining and mineral exploration activity, studies by industry, and results of recent geological field studies. Information in this volume comes from prospectors, exploration and government geologists, mining companies, and students who are willing to contribute to public geoscience for the benefit of the scientific community, general public, and mineral and petroleum industries of Yukon. Their efforts are appreciated.

Monica Nordling has returned again this year to work with me through Christmas, and into the New Year, in order to complete YEG. She enjoyed basking in the glory as our YEG 2012 volume received the first (in what we hope will be many) EMRIE Award for “Best EMR Publication” of 2013. The prized trophy is seen on the back cover of this issue. I would like to thank my Yukon Geological Survey colleagues for their comments and critiques of manuscripts; Patrick Sack and Charlie Roots helped with several papers, and thanks also to Don Murphy, Steve Israel, Maurice Colpron, David Moynihan, and Matt Hutchison.

We welcome any input or suggestions that you may have to improve future YEG publications. Please contact me at (867) 667-8519, or by e-mail at karen.macfarlane@gov.yk.ca.



Karen MacFarlane



Yukon Geological Survey staff: (front row, left to right) Monica Nordling, Carolyn Relf, Tiffani Fraser, and Lara Lewis; (back row, left to right) Sarah Laxton, Sam Darling, Panya Lipovsky, Lee Pigage, Bailey Staffen, Aubrey Sicotte, Matt Hutchison, Karen MacFarlane, David Moynihan, Robert Deklerk, Patrick Sack, Maurice Colpron, Steve Israel, Don Murphy, Charlie Roots, Midori Kirby, Derek Torgersen. Missing from photo: Sue Roy, Olwyn Bruce, Rosie Cobbett, Sydney van Loon, Kristen Kennedy, Jeff Bond, and Johann Slam.



TABLE OF CONTENTS

Preliminary stable isotope and geochemical investigation of carbonate in the Klondike district. M.M. Allan, J.K. Mortensen, and N. Cook.....	1
Pathfinder signatures in placer gold derived from Au-bearing porphyries. R.J. Chapman, M.M. Allan, M.K. Grimshaw, J.K. Mortensen, T.M. Wrighton, and S. Casselman.....	21
Preliminary observations on the geology of the Anvil Lake area (parts of NTS 105K/11 and 12), central Yukon. R.N. Cobbett.....	33
Field descriptions of the Middle-Upper Devonian Canol Formation on Trail River, east Richardson Mountains, Yukon. T. Fraser.....	53
Geology and jade prospects of the northern St. Cyr klippe (NTS 105F/6), Yukon. S.J. Isard and J.A. Gilotti.....	69
Preliminary investigation into the geologic relationships in the Granite Lake area, parts of NTS 115A/10, 11, 14, and 15, southwest Yukon. S. Israel and R. Kim.....	79
The early Neoproterozoic Chandindu Formation of the Fifteenmile Group in the Ogilvie Mountains. M. Kunzmann, G.P. Halverson, F.A. Macdonald, M. Hodgskiss, P.D. Sansjofre, D. Schumann, and R.H. Rainbird.....	93
A four stage evolution of the White Channel gravel: Implications for stratigraphy and palaeoclimates. R.I. Lowther, J. Peakall, R.J. Chapman, and M.J. Pound.....	109
Structural controls on alteration and mineralization at the Coffee gold deposits, Yukon. D. MacKenzie, D. Craw, and C. Finnigan.....	119
U-Pb age, whole-rock geochemistry and radiogenic isotopic compositions of Late Cretaceous volcanic rocks in the central Aishihik Lake area, Yukon (NTS 115H). G.A. Morris, J.K. Mortensen, and S. Israel.....	133
Bedrock Geology of NTS 106B/04, Eastern Rackla Belt. D. Moynihan.....	147
Geochemistry and U-Pb zircon geochronology of mid-Cretaceous Tay River suite intrusions in southeast Yukon. L.C. Pigage, J.L. Crowley, C.F. Roots, and J.G. Abbott.....	169
Sedimentary pyrite as a gold-source in sediment-hosted gold occurrences in the Selwyn basin area, eastern Yukon. P.J. Sack, L.V. Danyushevsky, R.R. Large, S. Gilbert, and D. Gregory.....	195
Bathymetric and geophysical surveys of the southern end of Kluane Lake, Yukon. D.H. Shugar.....	221

