

Yukon Exploration, Development and Mining, 2014

YUKON TERRANES

| Outboard | Intermontane | Ancestral North America |
|----------------|----------------|-------------------------|
| Chugach | Cache Creek | Cassiar |
| Yakutat | Stikinia | basinal facies |
| Insular | Quesnellia | shelf facies |
| Wrangellia | Yukon-Tanana | craton & cover |
| Alexander | Slide Mountain | Arctic |
| Kluane schist | | Arctic Alaska |

COMMODITY

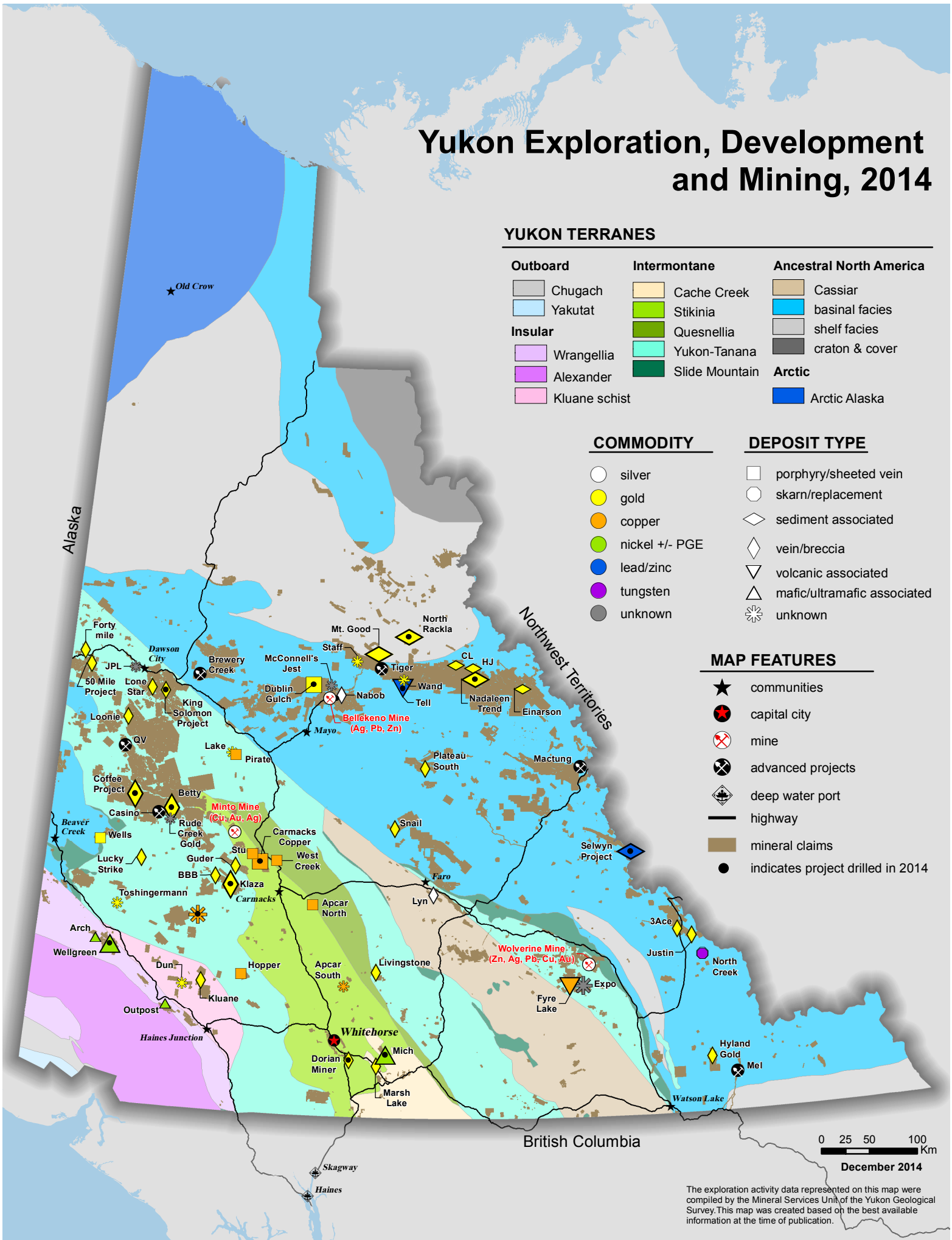
- silver
- gold
- copper
- nickel +/- PGE
- lead/zinc
- tungsten
- unknown

DEPOSIT TYPE

- porphyry/sheeted vein
- skarn/replacement
- sediment associated
- vein/breccia
- volcanic associated
- mafic/ultramafic associated
- unknown

MAP FEATURES

- communities
- capital city
- mine
- advanced projects
- deep water port
- highway
- mineral claims
- indicates project drilled in 2014



The exploration activity data represented on this map were compiled by the Mineral Services Unit of the Yukon Geological Survey. This map was created based on the best available information at the time of publication.