

Data sources:

Base data: Transportation, watercourses and toponymy, shaded relief (GeoYukon); parks/protected areas (GeoYukon, YLUPC, US National Parks Service); provincial boundaries (Department of Natural Resources Canada), toponymy (recompiled by YLUPC from Tr'ondëk Hwëch'in and Yukon Government)

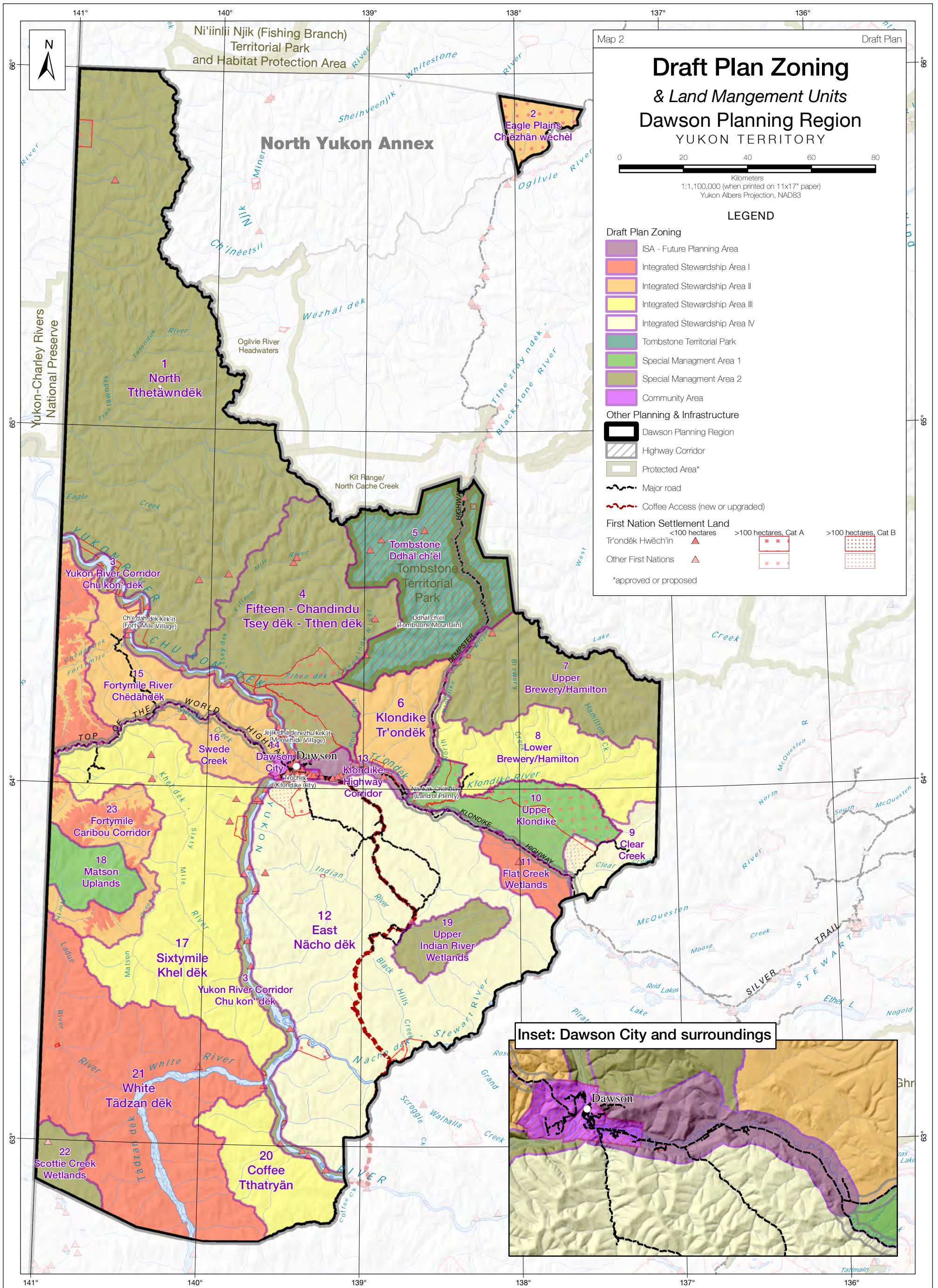
Thematic data: 1:250,000 draft land management units (DRPC); 1:250,000 planning regions (YLUPC); First Nations settlement lands (Yukon Government, recompiled by YLUPC); traditional territories (Yukon Government); land dispositions, March and May 2021 (Yukon Government); areas withdrawn from staking, March 2021 (Yukon Government); aerodromes from tourism public resource data, 2013 (Yukon Government)

Data disclaimer:

This map is a graphical representation, which depicts the approximate size, configuration and spatial relationship of known geographic features. While great care has been taken to ensure the best possible quality, this document is not intended for legal descriptions and/or to calculate precise areas, dimensions or distances. We do not accept any responsibility for errors, omissions or inaccuracies in this data.

Digital copies of this map may be obtained from the Dawson Regional Planning Commission and the Yukon Land Use Planning Council websites at:

dawson.planyukon.ca and www.planyukon.ca



Data sources:

Base data: Transportation, watercourses and toponymy, shaded relief (GeoYukon); parks/protected areas (GeoYukon, YLUPC, US National Parks Service); provincial boundaries (Department of Natural Resources Canada), toponymy (recompiled by YLUPC from Tr'ondëk Hwëch'in and Yukon Government)

Thematic data: 1:250,000 draft land management units (DRPC); 1:250,000 planning regions (YLUPC); First Nations settlement lands (Yukon Government, recompiled by YLUPC)

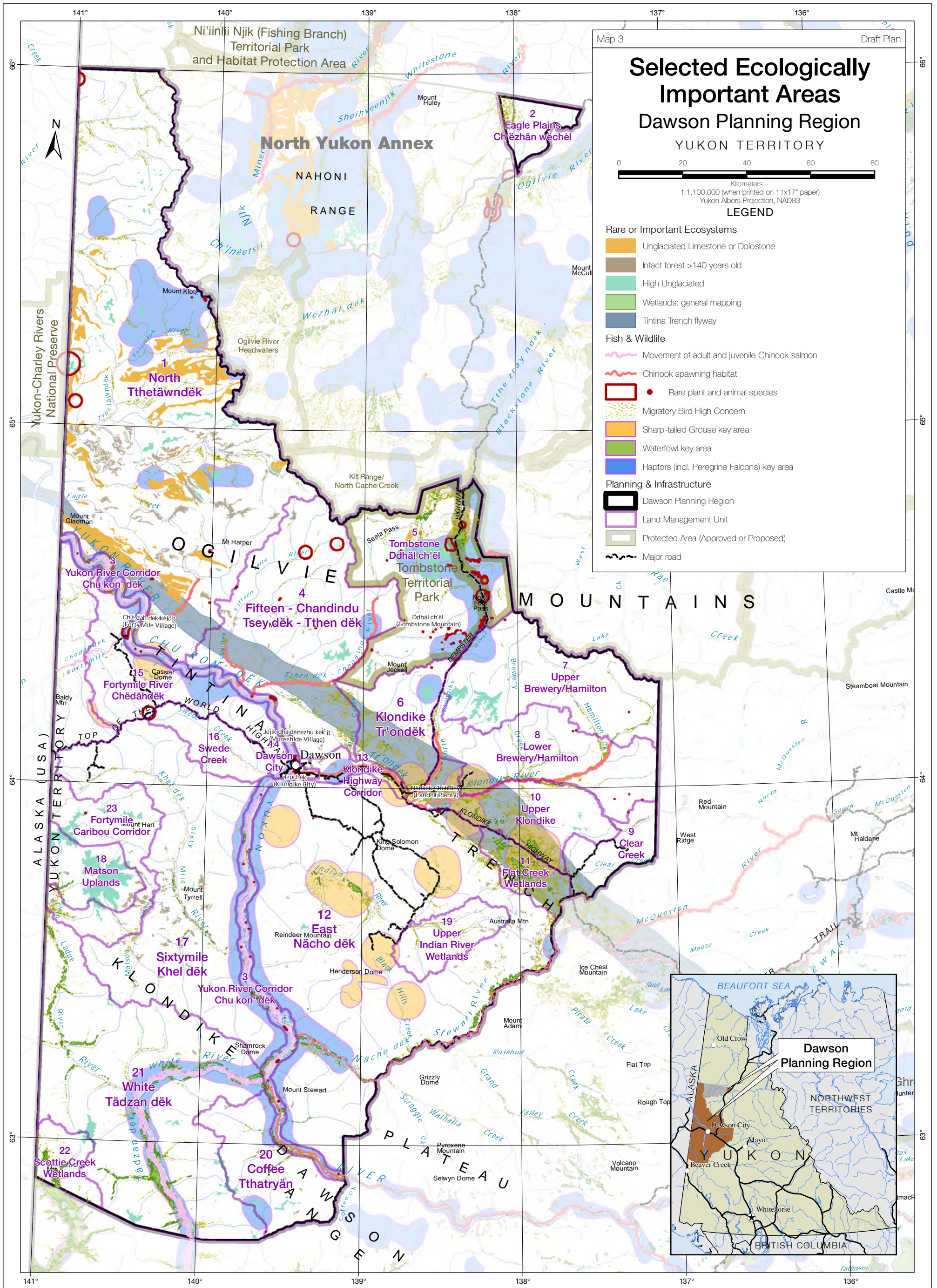
Data disclaimer:

This map is a graphical representation, which depicts the approximate size, configuration and spatial relationship of known geographic features. While great care has been taken to ensure the best possible quality, this document is not intended for legal descriptions and/or to calculate precise areas, dimensions or distances. We do not accept any responsibility for errors, omissions or inaccuracies in this data.

Digital copies of this map may be obtained from the Dawson Regional Planning Commission and the Yukon Land Use Planning Council websites at:

dawson.planyukon.ca and www.planyukon.ca

© Dawson Regional Planning Commission, June 2021



Data sources:
Base data: Transportation, watercourses and toponomy, shaded relief (GeoYukon); parks/protected areas (GeoYukon, YLUPC, US National Parks Service); provincial boundaries (Department of Natural Resources Canada), toponymy (recompiled by YLUPC from Tr'ondëk Hwëch'in and Yukon Government)
Thematic data: 1:250,000 draft land management units (DRPC); 1:250,000 planning regions (YLUPC); 1:250,000 Wildlife Key Areas (Yukon Government, 2014, 2019, Yukon Wildlife Key Area Inventory); rare ecosystems (Yukon Government 2011, 2018); 1:1M Chinook habitat described by Al von Finster and compiled by the YLUPC using 1:250K base data and Fish habitat for Porcupine drainages 2004 (Environmental Dynamics Inc for the North Yukon Planning Commission); Tintina Trench (from Yukon Government's Physiographic Regions, 2018); Bird habitat model based on YLUPC's interpretation of a 2018 letter from CWS to the DRPC using available land classification (Ecological Land Classification: Grods, J. et al., 2012. West-central broad ecosystems (Version 1.1). Spatial data created for Environment, Government of Yukon by Makonis Consulting Ltd. and Associates, West Kelowna, BC.)

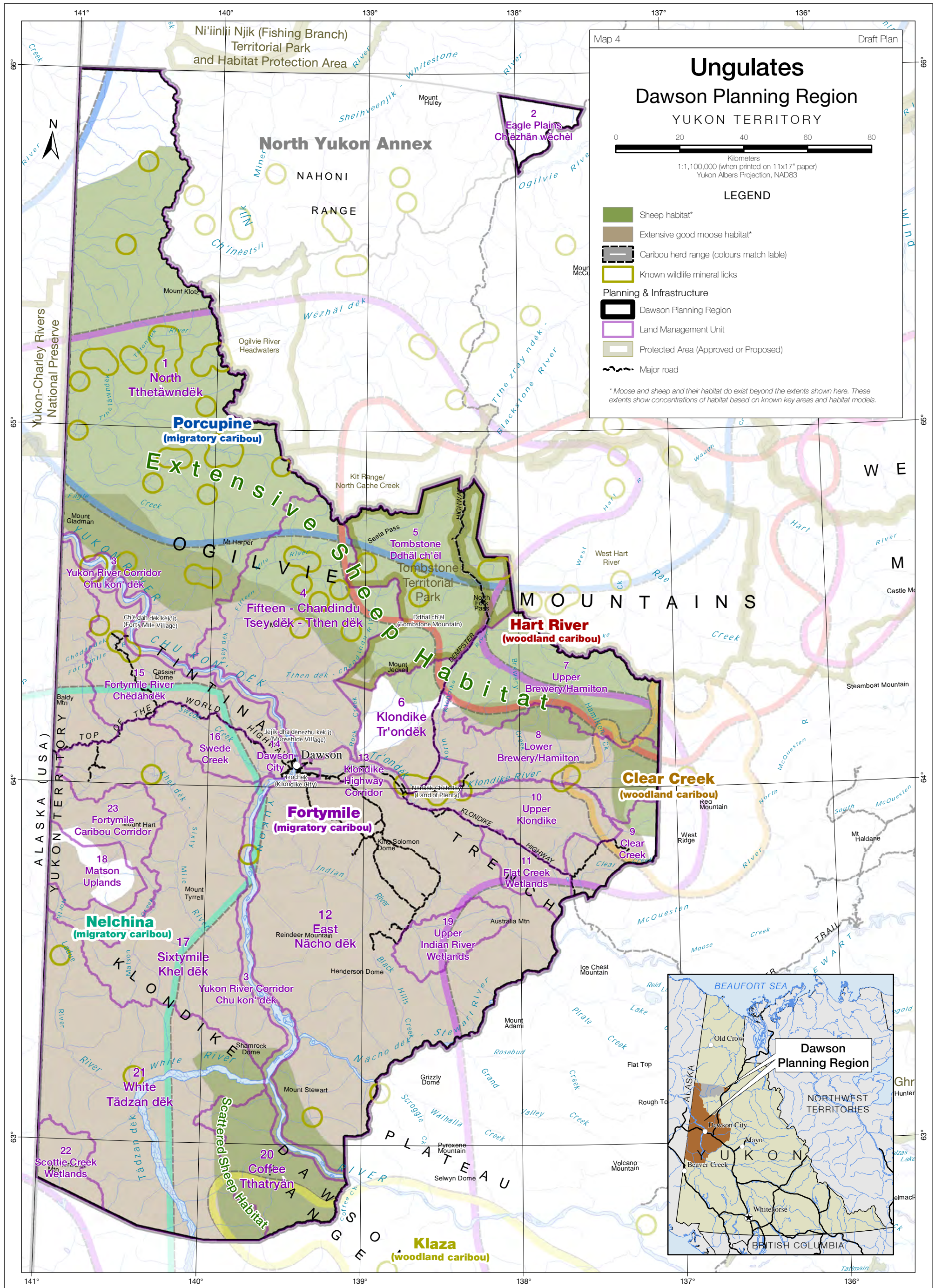
Data disclaimer:
 Wildlife Key Areas (WKA) are compiled by the Yukon Department of Environment WKA Inventory Program (2014 and 2019), against 1:250,000 NTDB from various data sources. Key Areas are based on observed locations of wildlife at key times of year, not on habitat assessment. With new information, boundaries and designations of Key Areas can change and additional Key Areas can be identified. Furthermore, Key Areas are not the only sites important for wildlife. Other information sources can identify other sites important for wildlife for reasons outside the scope of the WKA Inventory Program. Updates to Key Areas occur only periodically. For the most current information, please consult with the Regional Biologist for your area of interest. If you have questions or would like to contribute to the WKA database, please contact the WKA Inventory Program.
 This map is a graphical representation, which depicts the approximate size, configuration and spatial relationship of known geographic features. While great care has been taken to ensure the best possible quality, this document is not intended for legal descriptions and/or to calculate precise areas, dimensions or distances. We do not accept any responsibility for errors, omissions or inaccuracies in this data.

Digital copies of this map may be obtained from the Dawson Regional Planning Commission and the Yukon Land Use Planning Council websites at:

dawson.planyukon.ca and www.planyukon.ca

Draft Dawson Regional Land Use Plan 2021

© Dawson Regional Planning Commission, June 2021



Data sources:

Base data: Transportation, watercourses and toponomy, shaded relief (GeoYukon); parks/protected areas (GeoYukon, YLUPC, US National Parks Service); provincial boundaries (Department of Natural Resources Canada), toponomy (recompiled by YLUPC from Tr'ondék Hwé'ch'in and Yukon Government)

Thematic data: 1:250,000 draft land management units (DRPC); 1:250,000 planning regions (YLUPC); 1:250,000 Wildlife Key Areas (Yukon Government, 2014, Yukon Wildlife Key Area Inventory); caribou herd ranges (Yukon Government, 2018); General moose and sheep polygons manually digitized based on available habitat selection models (Yukon Government, 2012) and Yukon Wildlife Key Areas (Yukon Government, 2019) (Yukon Land Use Planning Council, 2019)

Data disclaimer: Wildlife Key Areas (WKA) are compiled by the Yukon Department of Environment WKA Inventory Program (2014 and 2019), against 1:250,000 NTDB from various data sources. Key Areas are based on observed locations of wildlife at key times of year, not on habitat assessment. With new information, boundaries and designations of Key Areas can change and additional Key Areas can be identified. Furthermore, Key Areas are not the only sites important for wildlife. Other information sources can identify other sites important for wildlife for reasons outside the scope of the WKA Inventory Program. Updates to Key Areas occur only periodically. For the most current information, please consult with the Regional Biologist for your area of interest. If you have questions or would like to contribute to the WKA database, please contact the WKA Inventory Program.

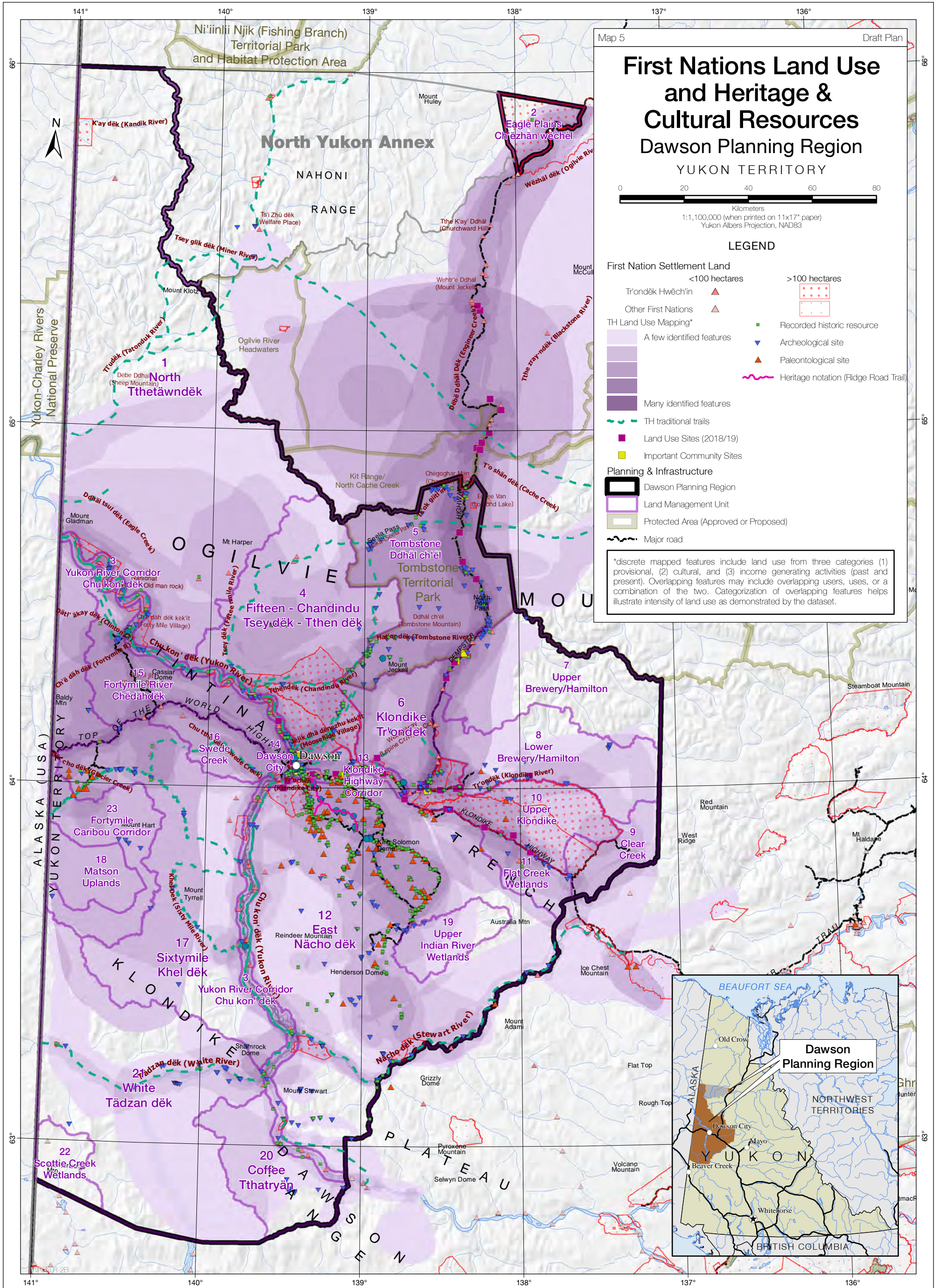
This map is a graphical representation, which depicts the approximate size, configuration and spatial relationship of known geographic features. While great care has been taken to ensure the best possible quality, this document is not intended for legal descriptions and/or to calculate precise areas, dimensions or distances. We do not accept any responsibility for errors, omissions or inaccuracies in this data.

Digital copies of this map may be obtained from the Dawson Regional Planning Commission and the Yukon Land Use Planning Council websites at:

dawson.planyukon.ca and www.planyukon.ca

Draft Dawson Regional Land Use Plan 2021

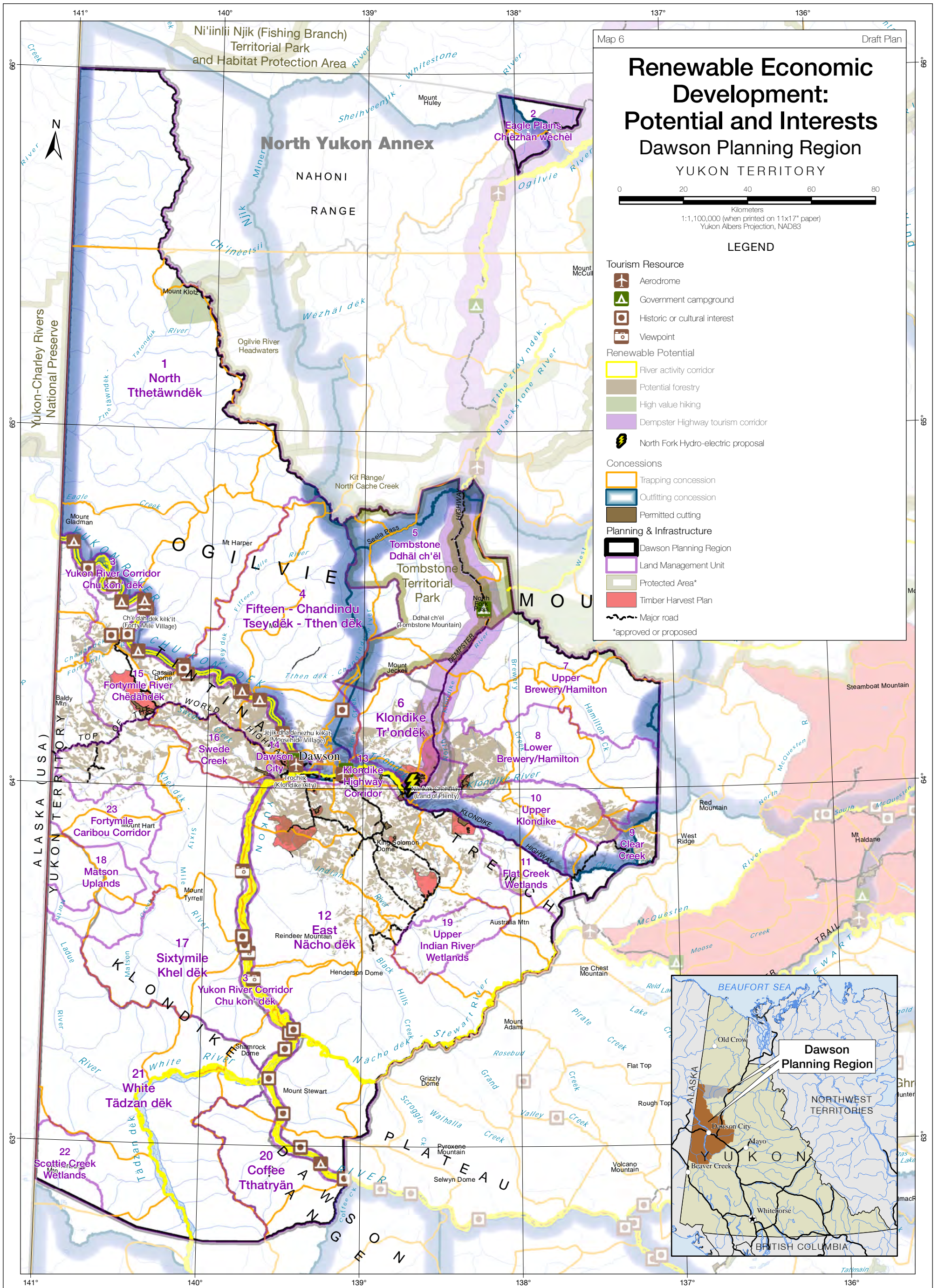
© Dawson Regional Planning Commission, June 2021



Data sources:
Base data: Transportation, watercourses and toponomy, shaded relief (GeoYukon); parks/protected areas (GeoYukon, YLUPC, US National Parks Service); provincial boundaries (Department of Natural Resources Canada), toponymy (recompiled by YLUPC from Tr'ondék Hwéché'in and Yukon Government)
Thematic data: 1:250,000 draft land management units (DRPC); 1:250,000 planning regions (YLUPC); First Nations settlement lands, 2019 (Yukon Government, recompiled by YLUPC); Traditional Trails, compiled from various sources, 2012 (Tr'ondék Hwéché'in); TH land use mapping, 2019 (Tr'ondék Hwéché'in)
Data disclaimer:

TH land Use mapping is representative of present-day indigenous land use, which is dynamic, not static, and thereby may change in the future. These data consists of information from ~50 individual TH knowledge bearers gathered in 2012 and 2018/19. This dataset is intended as a representative sample of TH community land use. It does not weight importance of areas nor does it confer TH conservation interests. These land uses are not necessarily representative of future land use intentions, on an individual or Nation scale. Heritage notation and reserves, June 2019 (Yukon Government); Historic resources (Dawson Region + Annex only) from the Yukon Historic Sites Database, December 2018 (Yukon Government); Archeological sites, February 2019 (Yukon Government); Paleontological sites around the Dawson Region, 2012 (Yukon Government)
 This map is a graphical representation, which depicts the approximate size, configuration and spatial relationship of known geographic features. While great care has been taken to ensure the best possible quality, this document is not intended for legal descriptions and/or to calculate precise areas, dimensions or distances. We do not accept any responsibility for errors, omissions or inaccuracies in this data.
 Digital copies of this map may be obtained from the Dawson Regional Planning Commission and the Yukon Land Use Planning Council websites at:

dawson.planyukon.ca and www.planyukon.ca



Map 6 Draft Plan

Renewable Economic Development: Potential and Interests Dawson Planning Region

YUKON TERRITORY

0 20 40 60 80
Kilometers
1:1,100,000 (when printed on 11x17" paper)
Yukon Albers Projection, NAD83

LEGEND

Tourism Resource

- Aerodrome
- Government campground
- Historic or cultural interest
- Viewpoint

Renewable Potential

- River activity corridor
- Potential forestry
- High value hiking
- Dempster Highway tourism corridor
- North Fork Hydro-electric proposal

Concessions

- Trapping concession
- Outfitting concession
- Permitted cutting

Planning & Infrastructure

- Dawson Planning Region
- Land Management Unit
- Protected Area*
- Timber Harvest Plan
- Major road

*approved or proposed

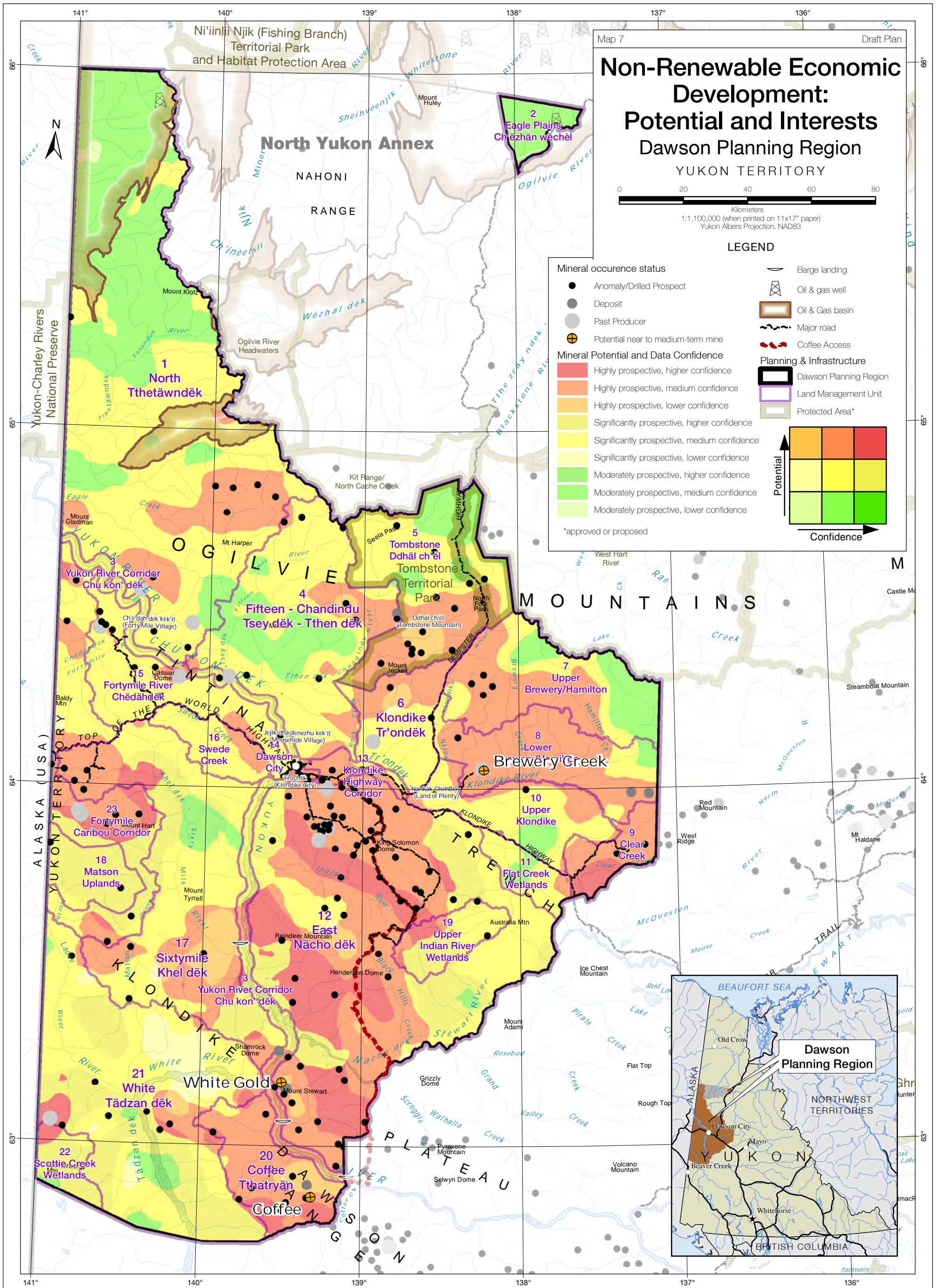
© Dawson Regional Planning Commission, June 2021

Data sources:
Base data: Transportation, watercourses and toponomy, shaded relief (GeoYukon); parks/protected areas (GeoYukon, YLUPC, US National Parks Service); provincial boundaries (Department of Natural Resources Canada), toponomy (recompiled by YLUPC from Tr'ondëk Hwëch'in and Yukon Government)
Thematic data: 1:250,000 draft land management units (DRPC); 1:250,000 planning regions (YLUPC); outfitting and trapping concessions, tourism activity and potential (Yukon Government); timber harvesting (February 2020, YG); tourism resource points (various sources, including YG, compiled by YLUPC); potential forestry that considers FRMP zone, distance from roads and stand age (DRPC).

Data disclaimer:
 This map is a graphical representation, which depicts the approximate size, configuration and spatial relationship of known geographic features. While great care has been taken to ensure the best possible quality, this document is not intended for legal descriptions and/or to calculate precise areas, dimensions or distances. We do not accept any responsibility for errors, omissions or inaccuracies in this data.

Digital copies of this map may be obtained from the Dawson Regional Planning Commission and the Yukon Land Use Planning Council websites at:
drpc.planyukon.ca and www.planyukon.ca

Draft Dawson Regional Land Use Plan 2020



Data sources:

Base data: Transportation, watercourses and toponomy, shaded relief (GeoYukon); parks/protected areas (GeoYukon, YLUPC, US National Parks Service); provincial boundaries (Department of Natural Resources Canada), toponomy (recompiled by YLUPC from Tr'ondëk Hwëch'in and Yukon Government)

Thematic data: 1:250,000 draft land management units (DRPC); 1:250,000 planning regions (YLUPC); oil and gas basins, oil and gas dispositions, oil and gas wells (Yukon Government, January 2020); mineral potential and numerous layers of mining and geologic information were considered in model) and mineral occurrence status (Yukon Geological Survey, 2019), potential mines (Dawson Regional Planning Commission), barge landings (various sources compiled by YLUPC, 2014)

Data disclaimer:

This map is a graphical representation, which depicts the approximate size, configuration and spatial relationship of known geographic features. While great care has been taken to ensure the best possible quality, this document is not intended for legal descriptions and/or to calculate precise areas, dimensions or distances. We do not accept any responsibility for errors, omissions or inaccuracies in this data.

Digital copies of this map may be obtained from the Dawson Regional Planning Commission and the Yukon Land Use Planning Council websites at:

drpc.planyukon.ca and www.planyukon.ca

Draft Dawson Regional Land Use Plan 2021

© Dawson Regional Planning Commission, June 2021