

Draft Land Use Plan Highlights

June 2021



Dawson
Regional
Planning
Commission

On The Land We Walk Together
Nän käk ndä tr'ädäl

The Dawson Planning Region



The Dawson Planning Region¹ is in the west central part of Yukon and is about 39,854 km² or 10% of Yukon. Three highways transect the region as well as the Yukon River. The population is 2220 (2017), representing 5.7% of Yukon's total population. Dawson City is the main settlement in the Region.



The Government of Yukon manages most of the region, which is public land. The Tr'ondëk Hwëch'in is also a major land holder in the region having 135 parcels of settlement land. These are the two Parties to the Plan who will be jointly responsible for its implementation.



The First Nations of Nacho Nyäk Dun and Vuntut Gwitchin First Nation, have overlapping traditional territory and White River, a non-self-governing First Nation under the UFA, have identified a land selection in the Region.



The Dawson Region is one of the most unique areas of the Yukon – it boasts opportunities and employment in mining and other economic sectors such as forestry, agriculture, wilderness tourism, trapping, big game outfitting, subsistence wildlife harvesting and fishing. It sustains a thriving community and cultural landscape, and healthy ecosystems that support a wide variety of fish and wildlife.



The Tr'ondëk Hwëch'in, as well as many other First Nations have lived and travelled in the area for generations. It is a place of immense importance as the Tr'ondëk Hwëch'in identity, culture, beliefs, traditions and practices are all rooted in the land (TH 2020).



The region is of global archaeological and paleontological interest because of its beringian and Gold Rush Past

¹ The City of Dawson (and surrounding communities), Tombstone Territorial Park, and Klondike National Historic Sites are not in the scope of the regional plan.



The purpose of this booklet is to introduce the Draft Plan for the Dawson Planning Region and to present some Key Highlights. The full version of the Draft Plan can be found at Dawson.PlanYukon.ca

The Draft Plan is not final and should not be read as such.

The Commission wants to hear your perspectives as well as your input on all plan elements, especially those identified in the plan for discussion. We have tried our best to respect the issues and interests as identified to us in the design of the Plan.



Draft Plan Concepts and Principles

Vision:

The future of the region will include a diverse economy, rich cultural legacy, healthy environment with a shared and respectful use of natural resources.

Sustainable Development and Stewardship:

The plan was built with a strong commitment to sustainable development as defined in the Tr'ondëk Hwëch'in Final Agreement and the principle of stewardship.

Land Use Designation System:

There are 23 Landscape Management Units (LMU) in the Draft Plan, and each are assigned one of the following land designations (or zones).

- 1 **Integrated Stewardship Areas (ISA)**
- 2 **Special Management Areas I & II (SMA)**
- 3 **Highway Corridors**
- 4 **Future Planning Areas**

Key Recommendations



Caribou

A mix of protection and limits to development in critical summer habitat and migration corridors.



Wetlands

Recognition of wetlands of special importance (Upper Indian River and Scottie Creek wetland complexes) and development limits in rare and sensitive wetland types.



Access

Careful and responsible development of roads and trails.



Stewardship

The introduction of Integrated Stewardship Areas in the land designation system, and creation of a Dawson Land Stewardship Trust for ongoing practice of stewardship.



Conservation Areas

Recommendation for legal designation for protection of Matson Uplands and Upper Klondike LMUs.



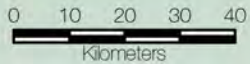
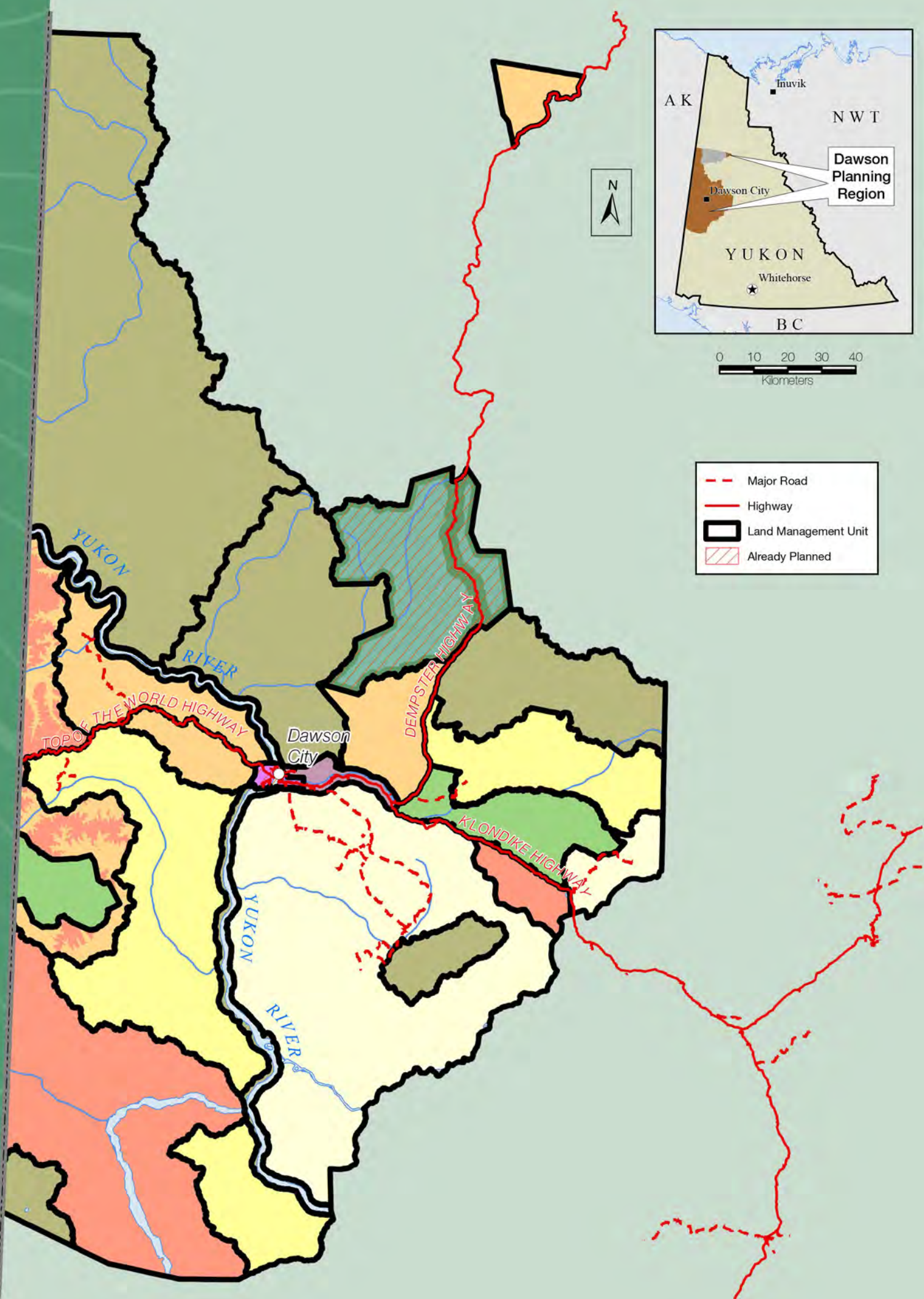
Mineral Development and Exploration

Continued viability of existing claims in areas designated as SMA II, support for recommendations in the Yukon Mineral Development Strategy.



What does Stewardship Mean?

Stewardship is taking collective responsibility and actions for the continued health and vitality of the region. It also means being part of a strong community that is connected to the land.



- Major Road
- Highway
- Land Management Unit
- Already Planned

Land Use Category	Sub-category	Description
Special Management Area	SMA I Maximum Conservation	<ul style="list-style-type: none"> • Intended for permanent withdrawal from any new industrial land use and surface access. • Intended to be legally designated as a protected area with a management plan.
	SMA II High Conservation	<ul style="list-style-type: none"> • Existing surface and sub-surface rights recognized. • Development can proceed subject to disturbance thresholds and special and general management direction. • Recommended for permanent or interim withdrawal from staking. • Not intended to be a legally designated protected area.
Integrated Stewardship Areas	ISA I Lowest Development	• Very high ecological and/or heritage/cultural values
	ISA II Low Development	• High ecological and/or heritage/cultural values
	ISA III Moderate Development	• Moderate ecological and/or heritage/cultural values
	ISA IV Highest Development	• Lower ecological or heritage/cultural values
Other		
	FPA Future Planning Areas	• Recommended for sub-regional planning
	Tombstone Park	• Out of scope of Planning Region

We want **your** feedback



The Draft Plan is open for discussion; **no final decisions have been made.** We want to hear from a diverse range of perspectives – we want this to be a plan that everyone can see themselves in, especially those that live and work in, and care for the Dawson region.

Here are some questions for you to think about:

What is your overall impression of the Draft Plan?

What does the plan need to be successful in supporting a future you envision?



We want to hear from **you!**

Throughout the Draft Plan you will see boxes (like this one!) that highlight specific options for a particular land issue or gaps that the Commission is seeking input on. Your comments in these areas will be particularly helpful for the Commission to reflect the community's vision for the Dawson Region. The consultation period is open until November 1, 2021

Areas that the Commission is seeking additional input are:

- 1 Wetlands
- 2 Special Management Area II
- 3 Draft Plan Format and Usability
- 4 Cumulative Effects Management
- 5 Stories from the Land

How do I **participate?**



Check out **engagedawson.planyukon.ca** for more information and to tell us what you think



Send us a **letter** or an **email** with your thoughts and input



Attend upcoming engagement **events** and **pop-ups**



Review and **respond** to questions in the Draft Plan

Our Commitment

The Commission will work with you to ensure your concerns and aspirations are considered when it is time to write the Recommended Plan. We commit to providing information on how input is considered by the Commission.



Public Engagement will be planned in several communities, including Dawson City, Whitehorse, Old Crow, Mayo and Beaver Creek.



Look out for the Commission and Staff this summer at pop-ups around Dawson, and formal workshops in the Fall.

Where We Are Now



What Happens Next?



As per Chapter 11 of the Tr'ondëk Hwëch'in Final Agreement, the next steps for the Commission are to consider all the feedback to this Draft Plan, and to create and submit the Recommended Plan to the Parties.

The Parties (Tr'ondëk Hwëch'in and Yukon governments) will then consult on it.



*On The Land We Walk Together
Nän käk ndä tr'ädäl*



**Dawson
Regional
Planning
Commission**

Office #4 (Southside)
978 2nd Ave,
Dawson City,
867-993-4400

Suite 201, 307 Jarvis St.
Whitehorse, Yukon
867-667-7397

EngageDawson.planyukon.ca
dawson.planyukon.ca
dawson@planyukon.ca