

Map 11 Relevant Sections: 5.8.3

Climate Change Forecasts Dawson Planning Region

YUKON TERRITORY

0 40 80 120 160
Kilometers
1:1,100,000 (when printed on 11x17" paper)
Yukon Albers Projection, NAD83

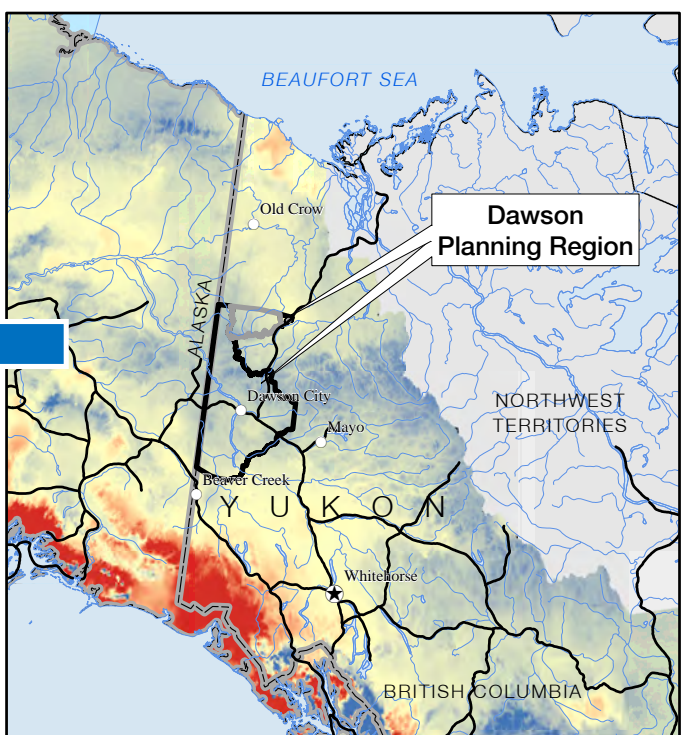
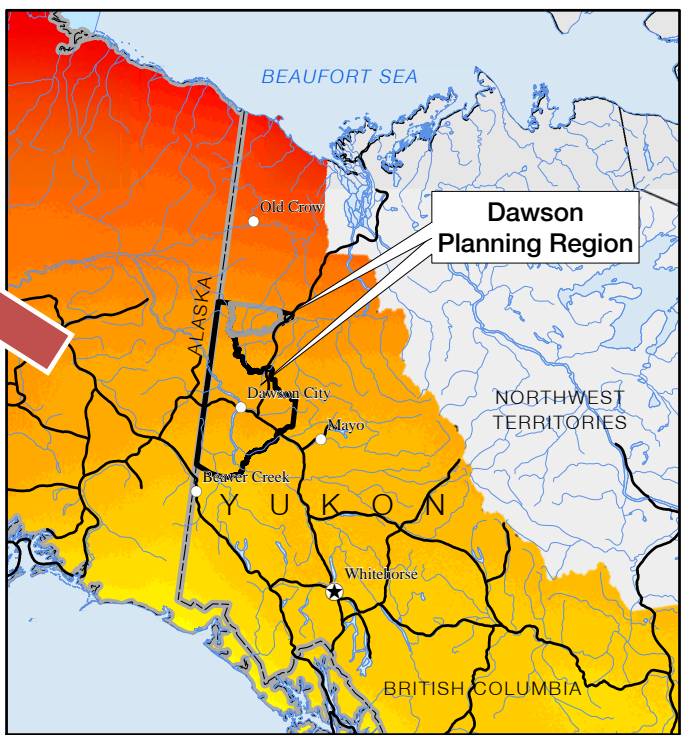
LEGEND

High : 7.5
Degrees Celsius increase by 2100
Low : 4

High : 50
Centimetres change in annual precipitation by 2100
Low : -50

Dawson Planning Region
Protected Area (Approved or Proposed)
Highway
Secondary/seasonal road

DRAFT



© Dawson Regional Planning Commission, August 2019

Data sources:
Base data: Transportation, watercourses and toponomy, shaded relief (GeoYukon); parks/protected areas (GeoYukon, YLUPC, US National Parks Service); provincial boundaries (Department of Natural Resources Canada), toponymy (recompiled by YLUPC from Tr'ondëk Hwëch'in and Yukon Government)
Thematic data: Climate model uses the first ensemble model run of the IPCC's Fifth Assessment Report, RCP 8.5 (most conservative forecast of change of greenhouse gas emissions) (SNAP at the University of Alaska, recompiled by Yukon Government, 2019)
Data disclaimer:
 This map is a graphical representation, which depicts the approximate size, configuration and spatial relationship of known geographic features. While great care has been taken to ensure the best possible quality, this document is not intended for legal descriptions and/or to calculate precise areas, dimensions or distances. We do not accept any responsibility for errors, omissions or inaccuracies in this data.
 Digital copies of this map may be obtained from the Dawson Regional Planning Commission and the Yukon Land Use Planning Council websites at: dawson.planyukon.ca and www.planyukon.ca