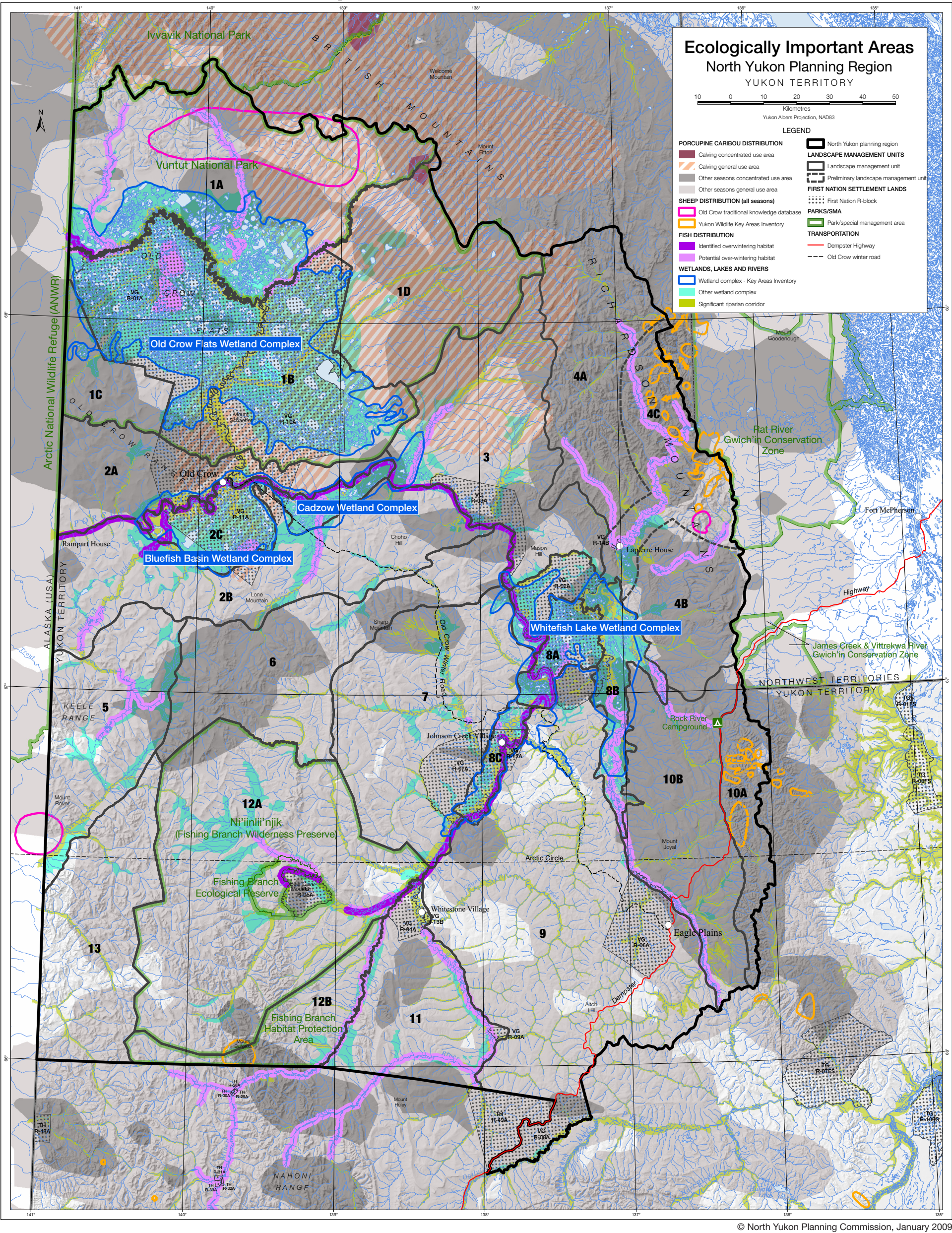


Final Recommended North Yukon Land Use Plan: Map 2



© North Yukon Planning Commission, January 2009

Data sources:

Base data: 1:250,000 National Topographic Database (NRCAN); seasonal roads (Yukon Energy, Mines & Resources), 1:250,000 toponomy, 90m shaded relief (Yukon Environment)

Thematic data: 1:250,000 Recommended land use designation (NYPC); Porcupine Caribou distribution, calving concentrated use area and calving general use area (USGS/BRD analysis, 1983-2001); Porcupine Caribou other seasons concentrated use area (Environment Canada, CWS analysis, 1985-2004); sheep distribution, Old Crow wildlife database (VGFN); sheep distribution, Yukon wildlife key areas (Yukon Environment); Fish overwintering habitat (NYPC); wetland complex, key areas inventory (Yukon Environment); other wetland complexes (Yukon Wetlands Technical Working Group); significant riparian corridor (NYPC); 1:250,000 planning regions (NYPC); 1:250,000 provincial boundaries, parks/protected areas, 1:1,000,000 parks/protected areas (Yukon Environment), First Nations settlement lands (R-blocks) obtained from NRCAN 1:30,000 maps and recompiled against 1:250,000 NTDB (Yukon Environment)

Data disclaimer:

This map is a graphical representation, which depicts the approximate size, configuration and spatial relationship of known geographic features. While great care has been taken to ensure the best possible quality, this document is not intended for legal descriptions and/or to calculate precise areas, dimensions or distances. We do not accept any responsibility for errors, omissions or inaccuracies in this data.

Digital copies of this map may be obtained from the North Yukon Planning Commission website at:

www.nypc.plan yukon.ca